

2 BDRM | 2 BATH | 1305 SQ FT

EBB BUILDING - OVERLOOK END

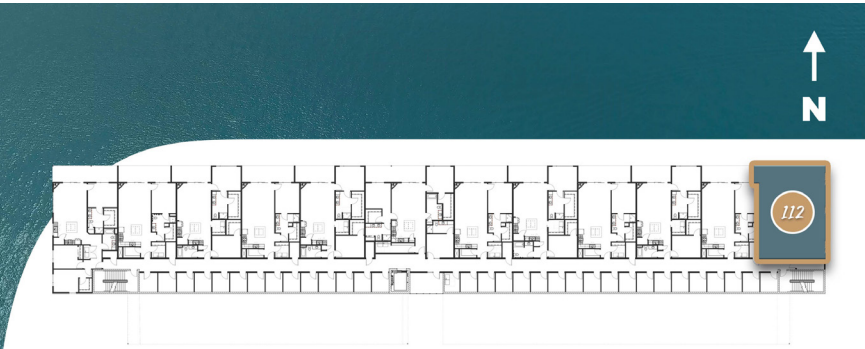
THE CURRENT  
OF THE FOX | Kimberly

Advantageously situated on the corner of the building, relish in the grand amounts of space, privacy and natural light in this two bedroom apartment from the moment of entry. Just through the hallway all attention flows to the spectacular three-panel, patio door set leading to an expansive nineteen foot balcony overlooking the Fox River. An open-concept living area is enhanced by a striking gas fireplace in the corner, while the gourmet kitchen features an eat-at granite island, high-end cabinetry, and a large pantry. The two bedrooms are separated for privacy, each with convenient bathroom access. The incredible views continue into the private master suite through a huge picture window with an operable section for fresh air flow, an oversized walk-in closet and an



ensuite bathroom. The ensuite bathroom extends the master bedroom’s privacy with a beautiful, granite double-vanity, and spacious shower. Proceed down the hall to find the second bedroom cozily tucked at the back of the apartment with a stunning view looking downriver, waiting to be illuminated by spectacular sunrises and a walk-in closet. The conveniently located bath features a granite vanity and a roomy shower/tub combination. The laundry room furnished with a full-sized washer and dryer

sits favorably in between the two bedrooms. Natural-looking hardwood-style floors and soaring 10-foot ceilings add to the beauty of this waterfront retreat.



UNIT # \_\_\_\_\_ RENT \$ \_\_\_\_\_

FLOOR \_\_\_\_\_ MOVE-IN \_\_\_\_\_